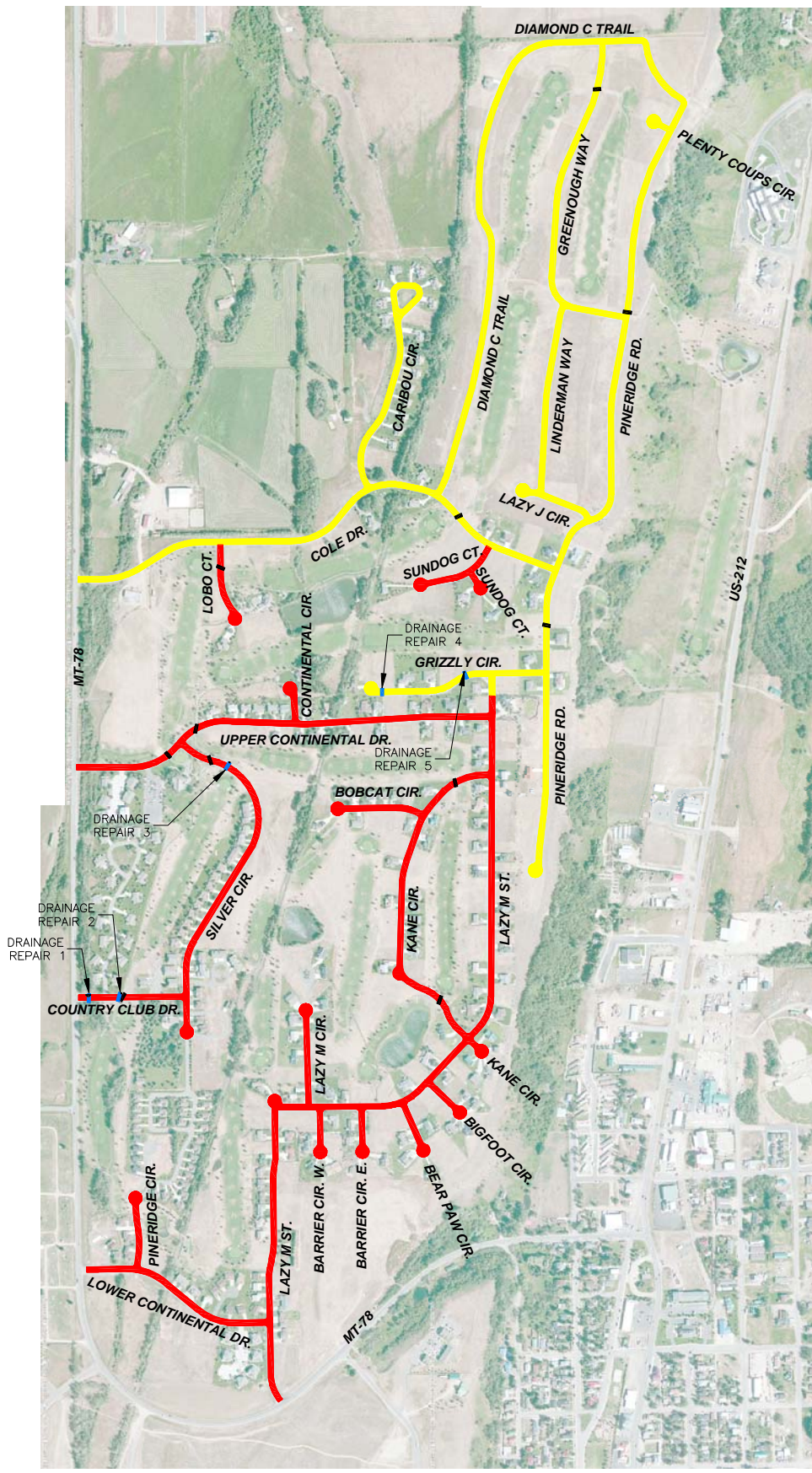
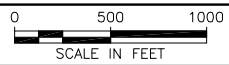


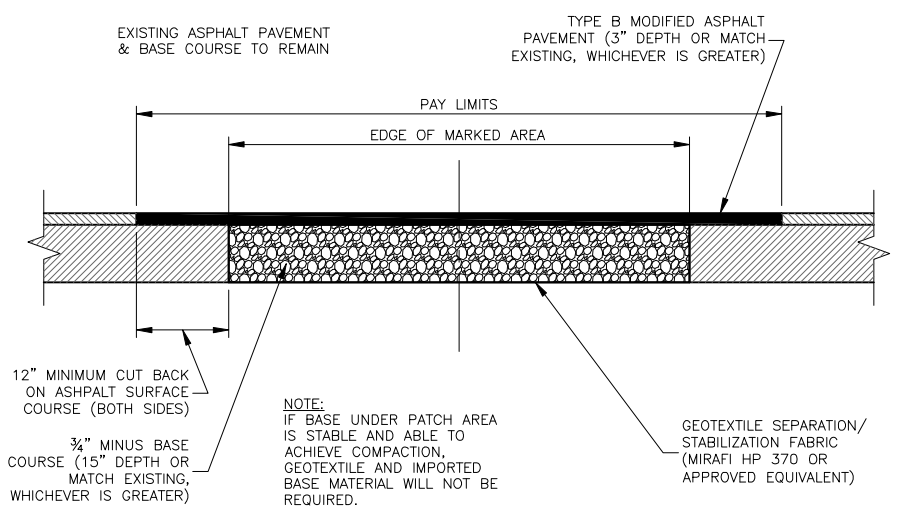
J:\2-17103 - Red Lodge On-Call 2017\TO 11 - Golf Course Roads SID\CADD 2-17103-TO11\Sheets\2-17103-TO11-02-Plan.dwg



**CCE STREETS MAINTENANCE OVERALL SITE PLAN**



LEGEND	
<span style="color: blue;">■</span>	DRAINAGE REPAIR AREA
<span style="color: red;">●</span>	SCRUB SEAL AND CHIP SEAL
<span style="color: yellow;">●</span>	CHIP SEAL ONLY
<span style="border-bottom: 1px dashed black; width: 20px; display: inline-block;"></span>	STRIPING IMPROVEMENTS



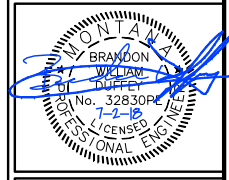
**1 ASPHALT PATCHING**  
2 NOT TO SCALE

**NOTES:**

1. ALL ROADS TO BE THOROUGHLY CLEANED OF SAND, DIRT, AND VEGETATION AND DRIED BEFORE PERFORMING CRACK SEALING AND STREET MAINTENANCE OPERATIONS.
2. CONTRACTOR TO COORDINATE WITH OWNER AND ENGINEER BEFORE PERFORMING ASPHALT PATCHING, BID ITEM 102. OWNER AND ENGINEER WILL MARK OUT ALL LOCATIONS TO BE REPLACED PER DETAIL 1, THIS SHEET.
3. ROADS DESIGNATED WITH A RED HATCH SHALL HAVE A SCRUB SEAL FOLLOWED BY A CHIP SEAL APPLICATION AFTER PATCHING AND CLEANING OF CRACKS AND GUTTERS HAS BEEN COMPLETED, SCRUB SEAL WILL BE APPLIED AT A RATE OF 0.41 TO 0.43 GALLONS PER SQUARE YARD OF PMRE POLYMER MODIFIED REJUVENATING EMULSION (PASS-CR2 OR APPROVED EQUAL) FOLLOWED BY 25 POUNDS PER SQUARE YARD OF 3/8" CHIPS. THE CHIP SEAL COAT WILL BE EMULSIFIED ASPHALT CRS-2P APPLIED AT A RATE OF 0.35 GALLONS PER SQUARE YARD FOLLOWED BY 25 POUNDS PER SQUARE YARD OF 3/8" SEAL COAT AGGREGATE MEETING REQUIREMENTS OF MPWSS 02504 AS MODIFIED BY SECTION 00950 AND SPECIAL PROVISIONS 23 AND 25.
4. ROAD DESIGNATED WITH A YELLOW HATCH SHALL HAVE A CHIP SEAL APPLICATION AFTER CRACK SEALING AND CLEANING HAVE BEEN COMPLETED. CHIP SEAL WILL BE APPLIED PER REQUIREMENTS IDENTIFIED IN NOTE 3.
5. IN LIEU OF CHIP SEAL, ALL CUL-DA-SACS WILL RECEIVE A TYPE II SLURRY SEAL. APPLY SLURRY SEAL AT A RATE OF 10-20 LBS/SY TO PROVIDE A UNIFORM FINISH THAT MATCHES WITH ADJOINING CHIP SEAL PER SPECIAL PROVISION-24
6. ALL STREETS ARE TO BE SWEEPED AFTER CHIP SEAL TO REMOVE ALL LOOSE AND EXCESS AGGREGATE FROM STREET AND GUTTER.
7. STRIPING IMPROVEMENTS WILL CONSIST OF ELEVEN (11) LOCATIONS ALL BEING STRIPED WITH TWO (2), 8-INCH WIDE WHITE STRIPES THAT ARE TEN FEET APART. STRIPES SHALL BE CENTERED ON THE RAMPS/CART PATH ENTRY/EXIST FROM STREET. PAINT SHALL BE WHITE WATERBORNE PAVEMENT MARKING PAINT MEETING REQUIREMENTS OF MPWSS 02581.
8. SEE SHEET 3 FOR MORE DETAIL ON DRAINAGE REPAIR AREAS.

NO.	REVISION DESCRIPTION	BY	DATE

PROJECT: 2-17103-TO11
DESIGNED: BWD
DRAWN: BWD
CHECKED: C. HANSON
APPROVED: B. DUFFEY
DATE: JULY 2, 2018



**CITY OF RED LODGE**  
**CCE STREETS MAINTENANCE PROJECT**  
**OVERALL SITE PLAN**