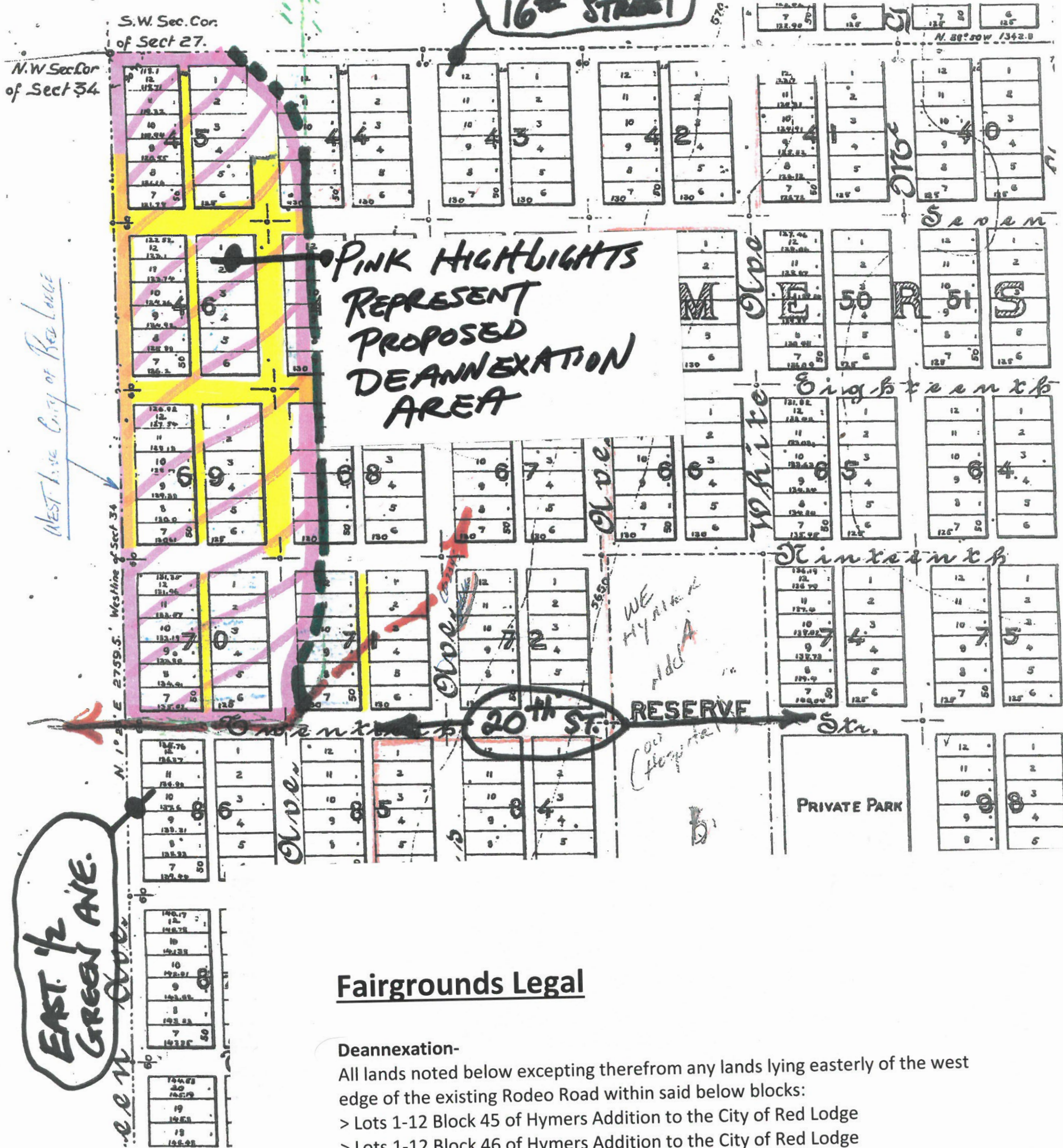


TRACT 2 COS 1811 AM
RL Rodeo Assoc

TRACT 1 AM
COS 1811 AM
City of RL

SOUTH HALF
16th STREET



Fairgrounds Legal

Deannexation-

- All lands noted below excepting therefrom any lands lying easterly of the west edge of the existing Rodeo Road within said below blocks:
- > Lots 1-12 Block 45 of Hymers Addition to the City of Red Lodge
 - > Lots 1-12 Block 46 of Hymers Addition to the City of Red Lodge
 - > Lots 1-12 Block 69 of Hymers Addition to the City of Red Lodge
 - > Lots 1-12 Block 70 of Hymers Addition to the City of Red Lodge
 - > West 100' of Lots 7-12 Block 44 of Hymers Addition to the City of Red Lodge
 - > West 100' of Lots 7-12 Block 47 of Hymers Addition to the City of Red Lodge
 - > West 100' of Lots 7-12 Block 68 of Hymers Addition to the City of Red Lodge
 - > West 100' of Lots 7-12 Block 71 of Hymers Addition to the City of Red Lodge

R.O.W. Vacation and Abandonment-

All rights of way to not previously vacated and abandoned with the County Fairgrounds as more particularly described above. (Yellow highlighted R.O.W.s were previously vacated)

EAST 1/2 GREEN AVE.

Airport Road

RODEO ROAD