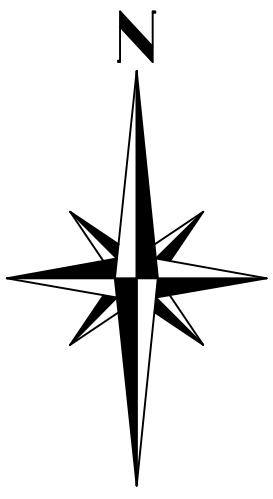


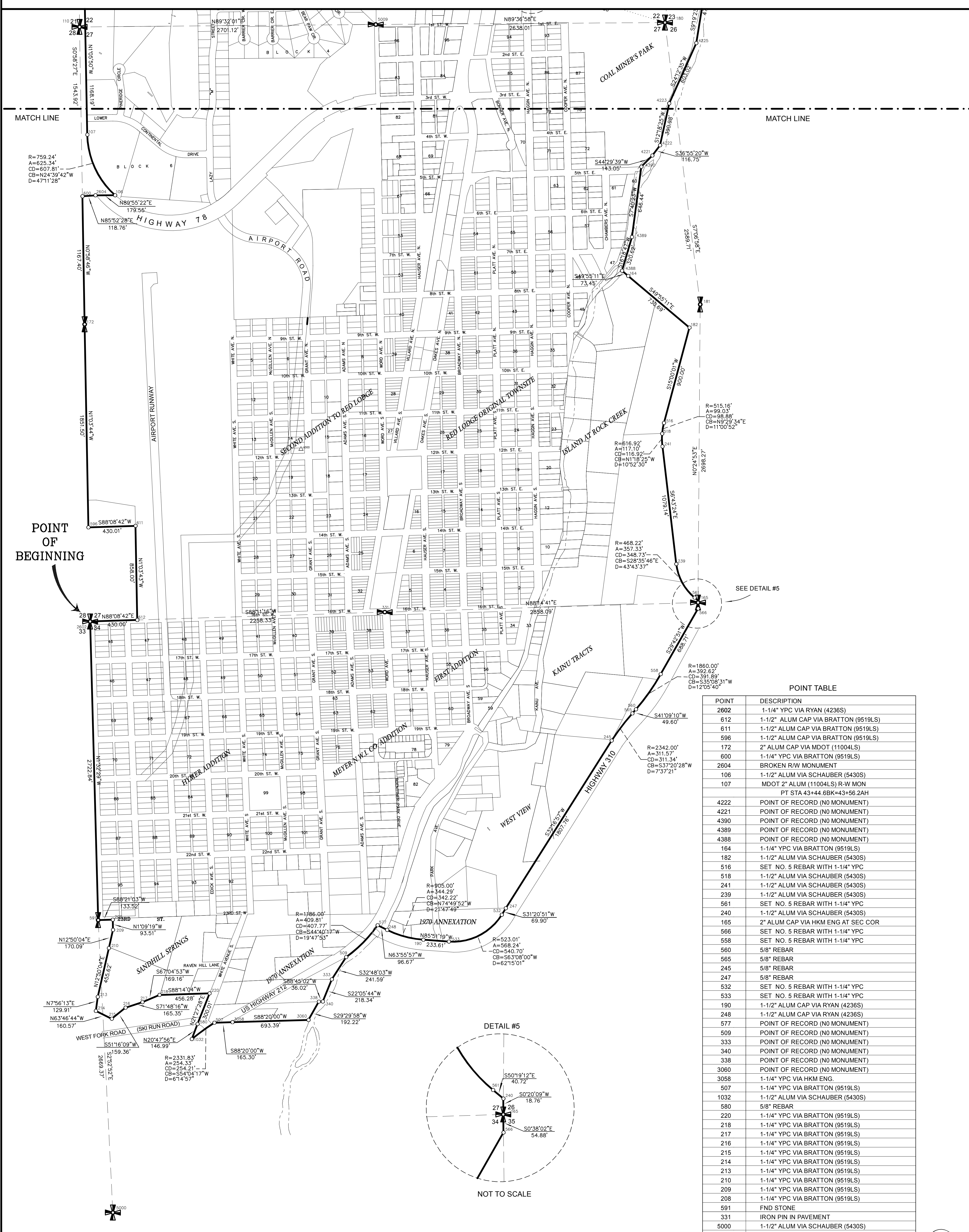
SURVEY OF THE BOUNDARY OF

THE CITY OF RED LODGE

LYING IN SECTIONS 15, 22, 27, 33 AND 34. T.7S., R.20E., P.M.M.
CARBON COUNTY, MONTANA



SCALE 1" = 400'
0 400 800



POINT TABLE

POINT	DESCRIPTION
2602	1-1/4" YPC VIA RYAN (4236S)
612	1-1/2" ALUM CAP VIA BRATTON (9519LS)
611	1-1/2" ALUM CAP VIA BRATTON (9519LS)
596	1-1/2" ALUM CAP VIA BRATTON (9519LS)
172	2" ALUM CAP VIA MDOT (11004LS)
600	1-1/4" YPC VIA BRATTON (9519LS)
2604	BROKEN R/W MONUMENT
106	1-1/2" ALUM VIA SCHAUBER (5430S)
107	MDOT 2" ALUM (11004LS) R-W MON PT STA 43+44.6BK=43+56.2AH
4222	POINT OF RECORD (NO MONUMENT)
4221	POINT OF RECORD (NO MONUMENT)
4390	POINT OF RECORD (NO MONUMENT)
4389	POINT OF RECORD (NO MONUMENT)
4388	POINT OF RECORD (NO MONUMENT)
164	1-1/4" YPC VIA BRATTON (9519LS)
182	1-1/2" ALUM VIA SCHAUBER (5430S)
516	SET NO. 5 REBAR WITH 1-1/4" YPC
518	1-1/2" ALUM VIA SCHAUBER (5430S)
241	1-1/2" ALUM VIA SCHAUBER (5430S)
239	1-1/2" ALUM VIA SCHAUBER (5430S)
561	SET NO. 5 REBAR WITH 1-1/4" YPC
240	1-1/2" ALUM VIA SCHAUBER (5430S)
165	2" ALUM CAP VIA HKM ENG AT SEC COR
566	SET NO. 5 REBAR WITH 1-1/4" YPC
558	SET NO. 5 REBAR WITH 1-1/4" YPC
560	5/8" REBAR
565	5/8" REBAR
245	5/8" REBAR
247	5/8" REBAR
532	SET NO. 5 REBAR WITH 1-1/4" YPC
533	SET NO. 5 REBAR WITH 1-1/4" YPC
190	1-1/2" ALUM CAP VIA RYAN (4236S)
248	1-1/2" ALUM CAP VIA RYAN (4236S)
577	POINT OF RECORD (NO MONUMENT)
509	POINT OF RECORD (NO MONUMENT)
333	POINT OF RECORD (NO MONUMENT)
340	POINT OF RECORD (NO MONUMENT)
338	POINT OF RECORD (NO MONUMENT)
3060	POINT OF RECORD (NO MONUMENT)
3058	1-1/4" YPC VIA HKM ENG.
507	1-1/4" YPC VIA BRATTON (9519LS)
1032	1-1/2" ALUM VIA SCHAUBER (5430S)
580	5/8" REBAR
220	1-1/4" YPC VIA BRATTON (9519LS)
218	1-1/4" YPC VIA BRATTON (9519LS)
217	1-1/4" YPC VIA BRATTON (9519LS)
216	1-1/4" YPC VIA BRATTON (9519LS)
215	1-1/4" YPC VIA BRATTON (9519LS)
214	1-1/4" YPC VIA BRATTON (9519LS)
213	1-1/4" YPC VIA BRATTON (9519LS)
210	1-1/4" YPC VIA BRATTON (9519LS)
209	1-1/4" YPC VIA BRATTON (9519LS)
208	1-1/4" YPC VIA BRATTON (9519LS)
591	FND STONE
331	IRON PIN IN PAVEMENT
5000	1-1/2" ALUM VIA SCHAUBER (5430S)
181	1-1/2" ALUM VIA SCHAUBER (5430S)
1000	OPC VIA RED LODGE SURVEYING

