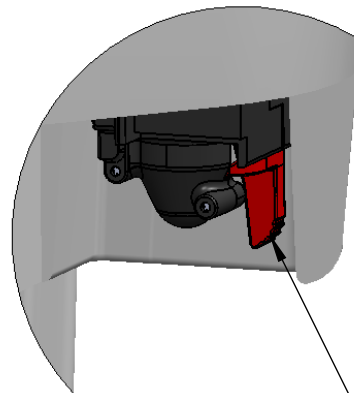


Manual opening instructions



DETAIL C
SCALE 1 : 2



From the container front as shown, locate latch openings below finger tabs.

Inside opening find the manual open lever (shown in red for clarity).

Push the lever towards the container until it stops and release to unlock latch.

After both latches are unlocked the lid may be opened.

Opening and reclosing the lid will relock the latches automatically.

Push manual opening lever here.

After moving the container to the roadside for refuse collection check the lid to make sure it's locked. Rolling the container over rough surfaces may unlock the lid.

Latch opening cut away to show detail.

Latch openings below finger tabs

Kodiak Products 96 gallon waste container specifications

Height: 46.5 inches, Width: 29.0 inches, Depth: 37.2 inches

Maximum load is 300 pounds or 136 kilograms

Empty weight is 52 pounds assembled