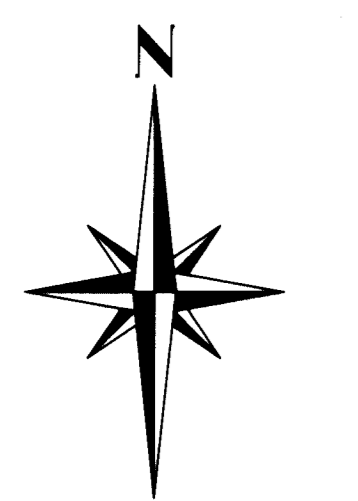
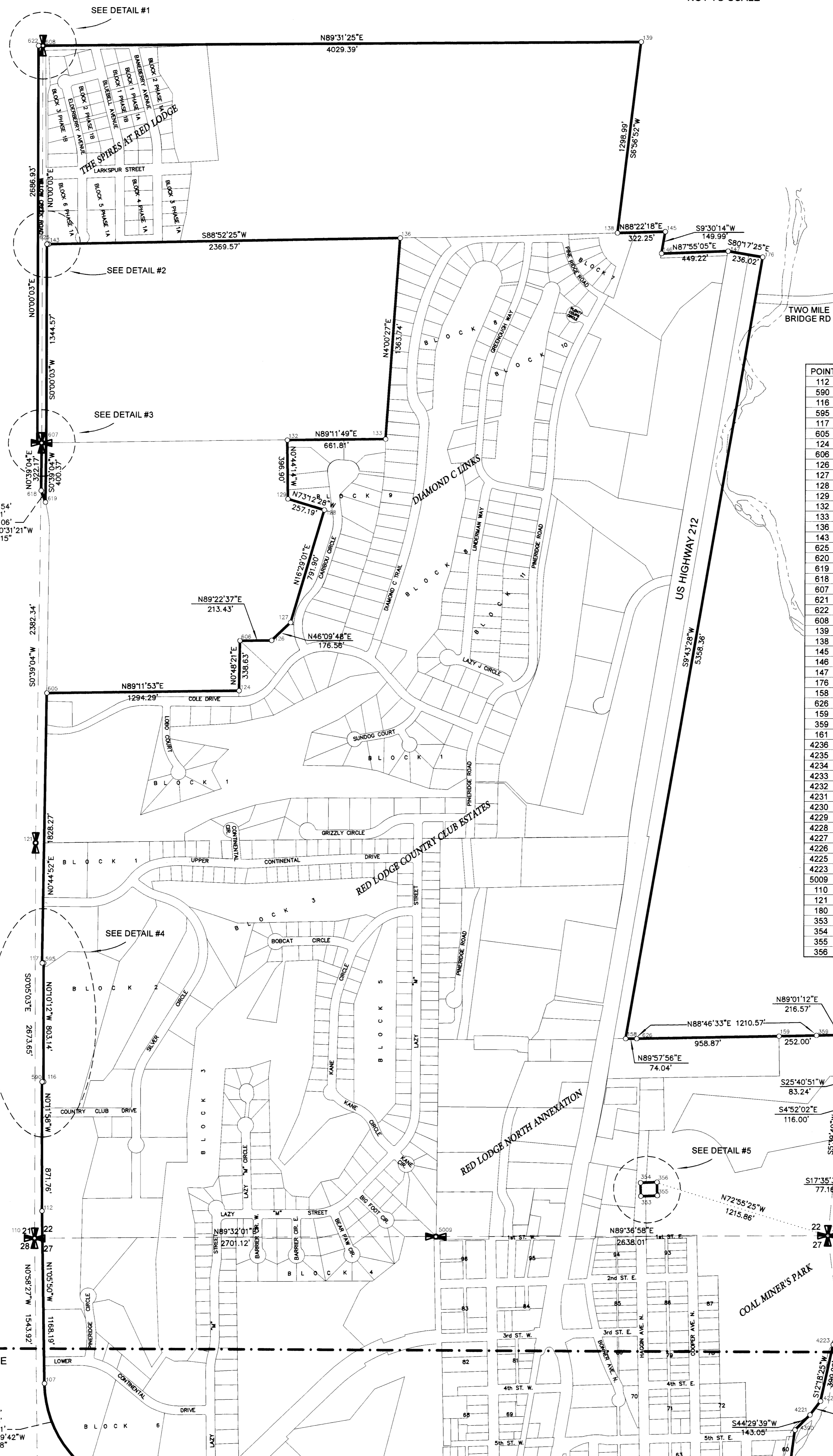
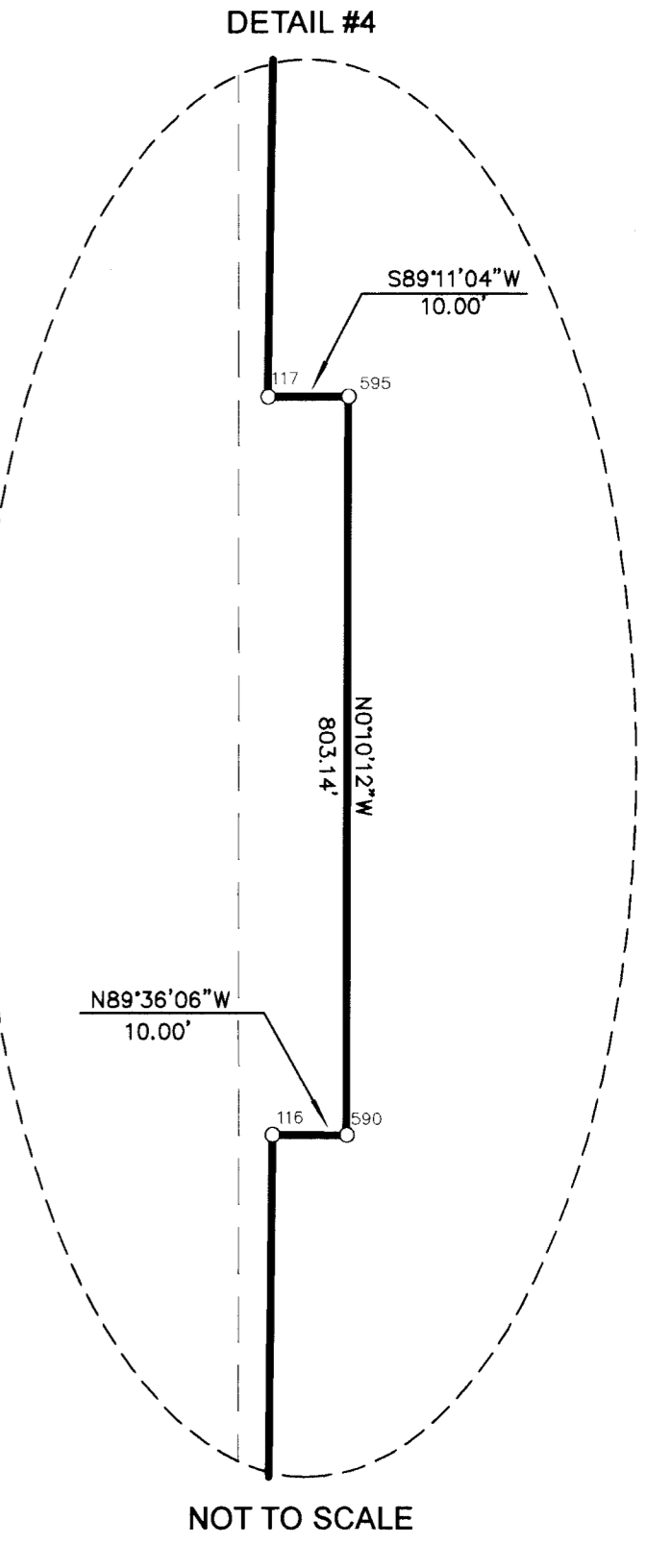
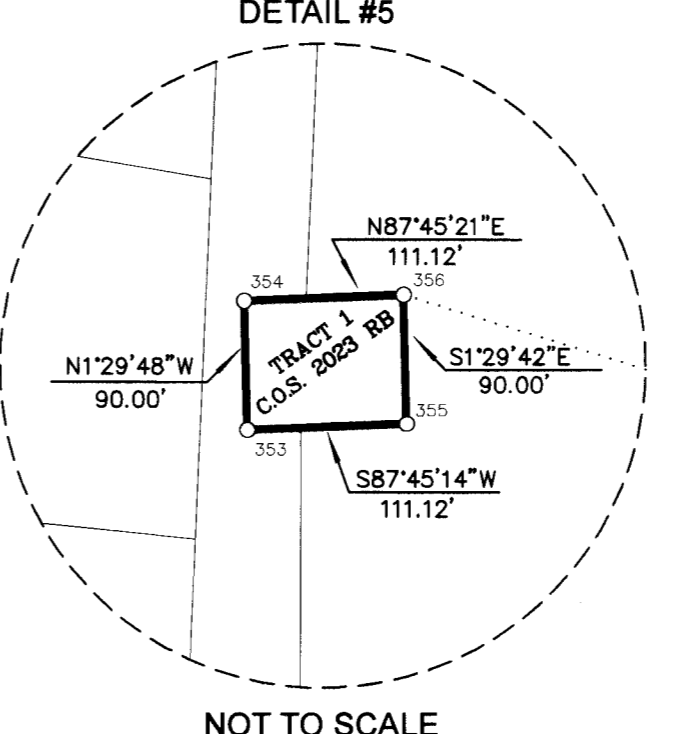
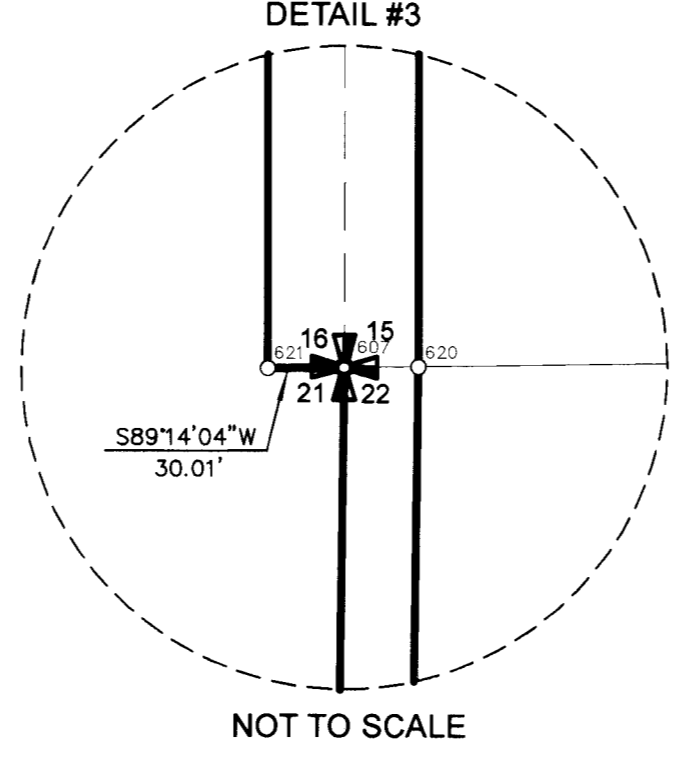
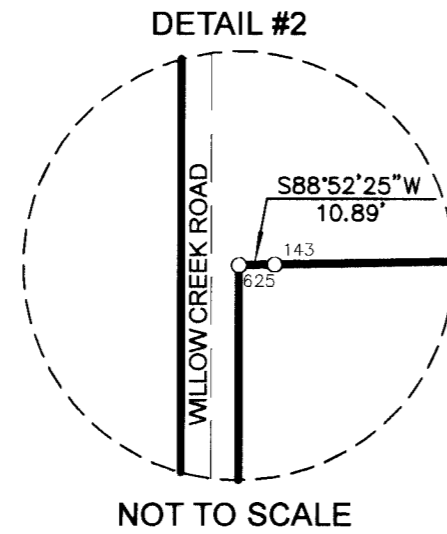
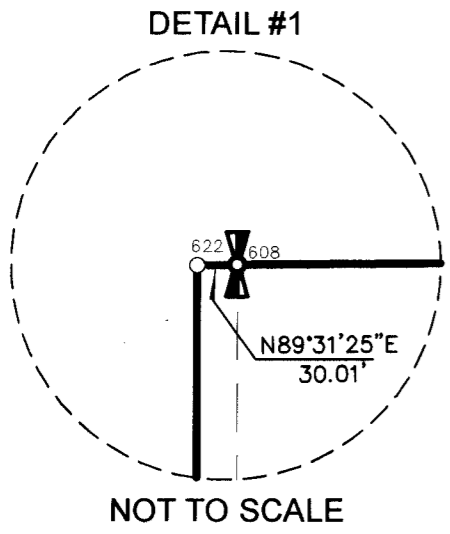


SURVEY OF THE BOUNDARY OF
THE CITY OF RED LODGE

LYING IN SECTIONS 15, 22, 27, 33 AND 34. T.7S., R.20E., P.M.M.
CARBON COUNTY, MONTANA



SCALE 1"=400'
0 400 800



POINT TABLE #1

POINT	NORTHING	EASTING	DESCRIPTION
112	26,312.157	14,890.970	MDOT 2" ALUM (11004LS) R-W MON PI STA 55+27
590	27,183.908	14,887.934	CONC R/W MON STA 64+00
116	27,183.841	14,897.934	CONC R/W MON STA 64+00
595	27,986.976	14,895.553	MDOT 2" ALUM (11004LS) R-W MON PI STA 72.00
117	27,986.834	14,885.554	MDOT 2" ALUM (11004LS) R-W MON PI STA 72.00
605	29,814.944	14,909.414	MDOT 2" ALUM (11004LS) R-W MON PC STA 101+21
124	29,833.058	15,203.582	1-1/4" YPC VIA ENG. INC. (8377S)
606	30,171.855	15,208.345	1-1/4" YPC VIA ENG. INC. (8377S)
126	30,173.975	16,421.762	1-1/2" ALUM VIA SCHAUBER (5430S)
127	30,296.265	16,549.121	1-1/2" ALUM VIA SCHAUBER (5430S)
128	31,055.617	16,773.815	1-1/2" ALUM VIA SCHAUBER (5430S)
129	31,129.920	16,527.589	1-1/2" ALUM VIA SCHAUBER (5430S)
132	31,526.787	16,522.483	1-1/2" ALUM VIA SCHAUBER (5430S)
133	31,536.062	17,184.227	1-1/2" ALUM VIA SCHAUBER (5430S)
136	32,896.466	17,279.536	1-1/2" ALUM VIA SCHAUBER (5430S)
143	32,849.883	14,910.423	1-1/4" YPC VIA BRATTON (9519LS)
625	32,849.869	14,899.535	NO MONUMENT FND OR SET
620	31,505.102	14,899.515	1-1/4" YPC VIA BRATTON (9519LS)
619	31,104.763	14,894.965	1-1/4" YPC VIA BRATTON (9519LS)
618	31,182.550	14,865.847	MDOT 2" ALUM (11004LS) R-W MON
607	31,504.701	14,869.508	MDOT 2" ALUM (11004LS) SEC COR
621	31,504.300	14,839.501	1-1/4" YPC VIA BRATTON (9519LS)
622	34,191.227	14,839.541	1-1/4" YPC VIA BRATTON (9519LS)
608	34,191.477	14,869.550	SET SPINDLE AT 1/4 COR
139	34,224.982	18,898.804	YPC VIA ATLAS ENG (2795S)
138	32,935.530	18,741.674	YPC VIA ATLAS ENG (2795S)
145	32,944.688	19,063.792	1-1/2" ALUM VIA SCHAUBER (5430S)
146	32,796.754	19,039.026	1-1/2" ALUM VIA SCHAUBER (5430S)
147	32,813.073	19,487.947	1-1/2" ALUM VIA SCHAUBER (5430S)
176	32,773.266	19,720.587	1-1/2" ALUM VIA SCHAUBER (5430S)
158	27,491.894	18,815.503	1-1/2" ALUM CAP VIA RYAN (4236S)
626	27,491.938	18,889.540	5/8" REBAR AT SE 1/16 S 22
159	27,512.423	19,848.191	1-1/4" YPC VIA BRATTON (9519LS)
359	27,517.807	20,100.133	5/8" REBAR
161	27,521.511	20,316.676	1-1/2" ALUM VIA SCHAUBER (5430S) AT S 1/16 COR
4236	27,523.757	20,386.142	POINT OF RECORD (NO MONUMENT)
4235	27,386.613	20,383.002	POINT OF RECORD (NO MONUMENT)
4234	27,252.842	20,358.042	POINT OF RECORD (NO MONUMENT)
4233	27,177.825	20,321.969	POINT OF RECORD (NO MONUMENT)
4232	27,093.188	20,301.359	POINT OF RECORD (NO MONUMENT)
4231	26,977.606	20,311.201	POINT OF RECORD (NO MONUMENT)
4230	26,898.332	20,339.279	POINT OF RECORD (NO MONUMENT)
4229	26,754.783	20,426.329	POINT OF RECORD (NO MONUMENT)
4228	26,598.519	20,489.711	POINT OF RECORD (NO MONUMENT)
4227	26,524.967	20,513.033	POINT OF RECORD (NO MONUMENT)
4226	26,452.182	20,544.661	POINT OF RECORD (NO MONUMENT)
4225	25,979.530	20,467.065	POINT OF RECORD (NO MONUMENT)
4223	25,429.545	20,219.779	POINT OF RECORD (NO MONUMENT)
5009	26,148.696	17,543.739	MDOT 2" ALUM (12448LS) 1/4 S22 S27
110	26,126.714	14,842.707	FND MDOT 2" AL SEC COR 21-22-27-28
121	28,800.366	14,838.777	MDOT 2" AL 1/4 COR 21-22
180	26,166.364	20,181.687	1-1/2" ALUM VIA SCHAUBER (5430S) SEC COR 22-23-26-27
353	26,429.077	18,910.745	1-1/4" YPC VIA BRATTON (9519LS)
354	26,519.046	18,908.394	1-1/4" YPC VIA BRATTON (9519LS)
355	26,433.431	19,021.778	1-1/4" YPC VIA BRATTON (9519LS)
356	26,523.397	19,019.430	1-1/4" YPC VIA BRATTON (9519LS)

PN 5093
R=759.24'
A=625.34'
CD=607.81'
CB=N24°39'42"W
D=47°11'28"